



PROFESSIONAL

Santa Maria Grill



FEATURES | BENEFITS

SINGLE MODULE

Wildwood's Professional Santa Maria Grill is composed of a single module.

THERMAL INSULATION

Our proprietary insulation maintains the in the heat in the fire box of the barbecue, reducing charcoal consumption compared conventional masonry equipment.

MANUAL GRILL OPERATION

Manual lifting using the side wheel.

HIGH QUALITY

Equipment designed and built with premium 304 stainless steel to provide the best barbecue performance and greater durability in professional

READY TO USE

No masonry construction required.

GRILLS OPTIONS

Standard with V shaped Grills made of carbon steel. Options in Stainless Steel V-shape, Stainless Steel U Shape, Stainless Steel round bars, carbon steel round bars and Flat Shape or partial style grills.

CLEANING

Equipment coated in brushed stainless steel 304 or 430 stainless steel with castors to move the barbecue and removable grills that facilitates the operation and cleaning.

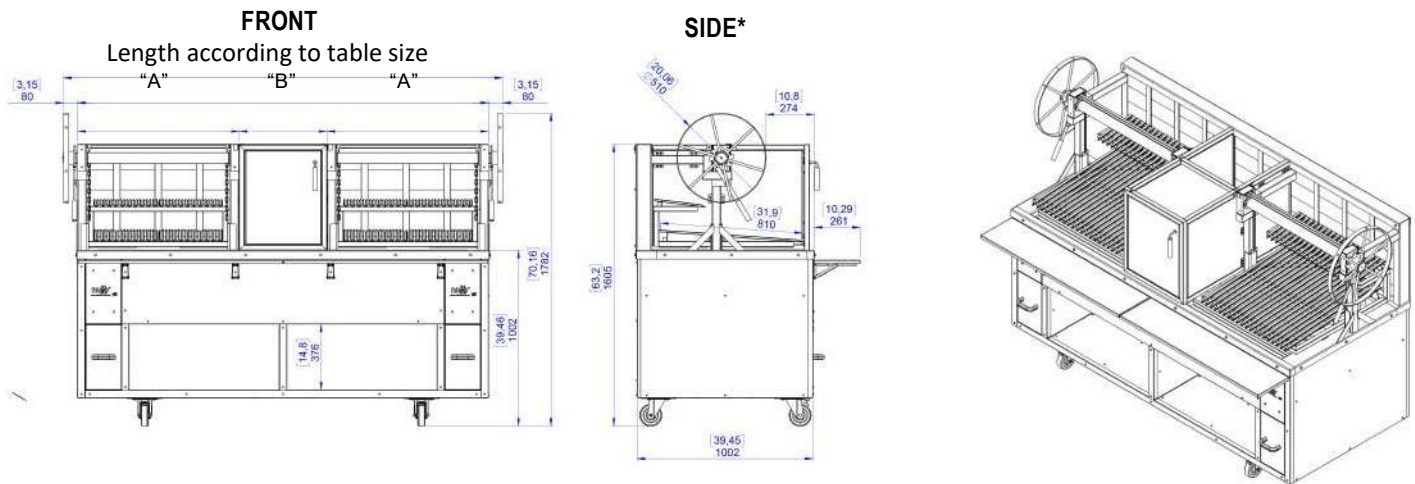


TABLE SIZE

Parrilla Overalllength "A" (mm)	Cooking Area Length (mm)	Firelighter Overalllength "B" (mm)	Depth (mm)	Height (mm)
600+80 (wheel)	400 x 810	500 600 700 800	1000	1610 + 170 (wheel)
800+80 (wheel)	600 x 810			
1000+80 (wheel)	800 x 810			
1200+80 (wheel)	1000 x 810			
1500+80 (wheel)	1300 x 810			

The overall length of this equipment is 2.800 mm. For lager sizes, ask for Modular Santa Maria Grill.

INFORMATION

FIRE BOX HEIGHT

Standard brick height up to grill: 8" . If you need another dimension, request this at tie of quotation.

ELECTRICITY

This machine does not require electrical installation. 100% manual activation.

EXHAUST

Equipment requires the installation of an exhaust fan to remove smoke. Check your local fire code and health regulations. Ventilation calculations need to be confirmed by a mechanical ventilation specialist, local consultant or contractor to ensure that the system meets local specifications.

OPTIONAL ITEMS

- Fixed/Movable Front counter with or without GN Tray gaps.
- Ash Drawer: Possible only if there is NO Brazier included.
- Steel Type: Available in stainless steel 304 and 430 (up to the threshold). The part below the threshold is produced in black version.

ACCESSORIES

- Charcoal compartment;
- Fire Box (central or side);
- V-grills made of carbon steel or stainless steel with a fat collector drawer;
- Round bar grills, U-shaped flat grill for fish;